

Chairman's Message. From Wayne Jackson

One of the roles of the Parish Council is to set the precept, which is the money requested from Chorley Borough Council to run village services. This amount is added to the Council Tax. For 2014-15 the precept is £9370 which is a reduction from last year and equates to £33-95 p.a. per Band D property.

We are very grateful to County Councillor Cynthia Dereli, the Parish Council Champion for giving us a grant of £350 towards the cost of a new Noticeboard, to replace the one 'blown over' in the recent gale.

The Parish Council has received a number of complaints about overhanging verges and hedges and we would be grateful if property owners whose hedges are overhanging and obstructing pavements could trim them, in the interests of pedestrian and road safety.

Sadly there has been a noticeable increase in the amount of dog excrement left on pavements around our village. After a request from the Parish Council, Chorley BC have put reminder signs around the village and will be following up with patrols by the Dog Warden to challenge people who are not acting responsibly. We hope local dog owners will support us in our campaign. **Remember: You can be fined up to a £1000 if you do not clear up after your**



PARISH COUNCILLORS

Chairman

Cllr Wayne Jackson; Tel: 600500

Vice Chairman

Cllr John Pigott; Tel: 601455

Cllr Robert Booth; Tel: 600100

Cllr Gwyneth Lloyd; Tel: 600705

Cllr Simon Moulton; Tel: 601388

Cllr Tony Rigby; Tel: 600602

Clerk to the Parish Council:

Glenys Southworth

12 The Avenue

Penwortham

PR1 0SU

01772 746178

Email: brethertonpc@yahoo.co.uk

The next meeting of the Parish Council will be on Monday 7th April, 2014 at 8pm at Bretherton Endowed C of E Primary School. Press and Public are very welcome.

SCAM ALERT; Fake coupons for money off well-known brands have recently been discovered in Lancashire. Coupons available to buy on the internet may be fakes. If they are purchased and used to buy products in shops or supermarkets, consumers may find that they are trading an illegal product and may lose money.



Congratulations to David Ryding: Britain's Best Alpine Skier.

Bretherton's David Ryding, achieved another milestone in his career by finishing 17th in the Men's Slalom at the Sochi Olympics in February. David competes regularly in the World Cup and Europa Cup races and his success is bound to get him recognised as a world class skier with hopes of even greater success in the future.

The Parish Council, along with everybody in the village congratulate David on his fantastic achievement and his family for the great support they give him.

**Bretherton Primary School-news from the Headteacher-
Nick Ward**

We try to give our children a variety of positive experiences whilst they are with us and below are some of the activities we have organised recently.



Our Y6 children visited Chorley Magistrates Court to learn more about the legal system, as well as participating in a mock trial.

Y1-3 children enjoyed a special assembly from Gary who works for Blackburn Rovers. He gave them information about an exciting new Multi-Skills club which will be being run for Y1-3.

Jo from Action Aid visited us to talk about how important our sponsorship of Anesu is, and then led worship.

Our Athletics team competed in the Lancashire Games Sportshall Athletics Final in Cleveleys.

Our school football team were mascots for Bamber Bridge Football Club., and did a great job.

Thank you to
All the parents who completed the parental questionnaire-
the results were very positive

Bridget Murphy, Lucy Ainscough-Wenham and Katie Hawes for baking cakes for our raffle to raise funds for an African orphanage

The PFTA for organising a disco in February

Bretherton Cricket Club – Season 2014; Matches start in mid-April for both our teams. Indoor net practices started on Wednesday 26th February (9:00pm) at Lostock Academy. If you would like to join us, please come along (we can accommodate any kind of players). Outdoor nets will commence on the ground during April on Tuesday evenings from 6:30pm. Our 'Annual Cricket Force' day is to be held on Saturday/Sunday 5th/6th April, when we will be 'sprucing up' the ground. For fixtures, results, sponsorship opportunities, please visit our website – www.bretherton.play-cricket.com or contact Mick on 07962 252433.



BRETHERTON PARISH INSTITUTE Don't forget to take advantage of the facilities offered by The Institute, which is also available to hire for small events. Details available from John Hart 07715001392

BIRDS IN BRETHERTON; We did the RSPB garden birds survey on one day at the end of January. Our results were: 9 Blackbird, 8 House Sparrow, 6 Collared Dove, 4 Starling, 3 Goldfinch, 4 Chaffinch, 4 Tree Sparrow, 4 Greenfinch, 3 Goldfinch, 2 each of Blue Tit, Great Tit, and Dunnock 1 Robin. We were surprised at the number of collared doves and lack of pheasants .

If you have any comments or observations you would like to share please contact me.
John Jolley South View; Telephone No 600896 Email jolley@johnjolley.plus.com



.BANK HALL UPDATE

Luckily the snowdrops produced an excellent show for our Snowdrop Sundays.

Our next Open Day will be on the 23rd March when we are opening for Daffodils and a Volunteers Day. Anyone interested in Volunteering can chat to our Members and enrol as a Volunteer if they wish to help.

We will be open on Easter Sunday for our Bunny Hunt and additional activities and displays. Ahead of the main project starting we have been preparing a new access into the grounds as the usual entrance will not be available for the general public to use. Currently BAT Mitigation work is underway as this has to be done before any work can start on the Main project. Once again thank you to all our supporters.

Website: www.bankhall.org

Email enquiries to:

secretary.fbh@hotmail.co.uk

NEWS OF 'BRETHERTON BUZZARDS' FROM CLARE HUGHES

Bonne Annee (Happy New Year)! Here we are again at the start of a New Year and Season. Our first competition was on the 5th January at the Black Horse, Croston. A good day was had by all. The Charity Shield eventually being won by Christine and Eileen from the Amazons-well done ladies. We hold the second league competition at Bretherton- the Bretherton Doubles on the 6th April, with a hot pot lunch. The season of weekly games will begin on the 15th April.



Here's to a good and winning season!

SNOOKER; Competitions end in April, and it's been a successful year in the different leagues. **Southport and District League;** an additional team has been formed. In Div 3 the B Team are second and hoping for promotion and the A team are mid table. **Astland League;** the A team in Div 1 finished mid-table, and the C Team won promotion to Div 1. **Preston League;** the veterans won the knockout cup competition. Bretherton Institute also runs competitions in Summer and Winter. Further details available from John Hart 07715001392



Monitoring of Speeding Traffic.

Traffic levels on both NORTH ROAD and SOUTH ROAD have increase steadily over recent years along with speed levels. The Parish Council are always campaigning to ensure that people keep to the speed limits and that accidents are minimised. Using the Intelligent SpID, "smiling face" device we are able to monitor the speed of traffic, though not the registration numbers of vehicles. Following discussion at the last Parish Council Meeting it was agreed that we would publish a summary of the data we have collated for each SpID location since the activity started:



South Road	Speed Limit	Travel Direction	Total Vehicles	Average Speed	Vehicles over 30 mph		Vehicles over 35 mph	
					No.	%	No.	%
Copelands Farm	30 mph	West	26712	28.3	5549	20.8%	651	2.4%
Iron Barn	30 mph	West	22231	31.2	10649	47.9%	3762	16.9%
Rose Cottage	30 mph	East	18497	30.0	6851	37.0%	1817	9.8%

North Road	Speed Limit	Travel Direction	Total Vehicles	Average Speed	Vehicles over 50 mph		Vehicles over 55 mph	
					No.	%	No.	%
Moss Cottages	50 mph	West	18769	43.8	2714	14.5%	830	4.4%
Pompian Brow	50 mph	West	15847	44.5	2740	17.3%	835	5.3%
Canal Leach	50 mph	West	14140	45.3	1976	14.0%	500	3.5%
Finches Farm	50 mph	East	19219	45.3	3826	19.9%	1386	7.2%

The figures support the Parish Council's ongoing campaign for a 30 mph speed limit between Canal Leach and Carr House Lane on North Road, particularly around the junction with Pompian Brow.

They also support the need for the regular mobile speed checks carried out on South Road between the Apiary and Bretherton School by Lancashire County Council.

More Robust Power Supply Promised.

At the request of the Parish Council, representatives of Electricity North West (ENW) attended the February meeting to discuss the unacceptable level of power cuts affecting the South Road/Bamfords Fold/Back Lane and Pompian Brow areas.



ENW explained that the area is supplied by two overhead lines from Tarleton and Seven Stars in Leyland. The supply from Tarleton has been interrupted 8 times since June 2013, sometimes not being restored for many hours but there have been very few problems on the Seven Stars line. Most of the damage to Tarleton lines has occurred in the Liverpool Road area where the line runs south/north before branching off east to Eyes Lane. ENW have proposed an improvement to the supply lines by installing a "switch" on the line between Liverpool Road and Eyes Lane which, if there is damage to the lines, will enable Bretherton homes to be switched on to the Seven Stars supply line whilst repairs are carried out..

The proposed solution will require permission from the Lilford Estate. Providing permission is forthcoming, the improvements should be completed before the end of Spring 2014. If anyone would like more information please contact Councillor John Pigott; 01772 601455

Bretherton Film Society:



Record Attendance!

The Film Society are coming to the end of their 2014 Spring Season which has been particularly well attended. The final showing for this season is

Friday 28th March: SAVING MR BANKS - starring Emma Thompson, Tom Hanks, Annie Rose Buckley. Cert PG. (125 mins). When Walt Disney's daughters begged him to make a movie of their favourite book, P.L. Travers' Mary Poppins, he made them a promise - one that he didn't realize would take 20 years to keep. In his quest to obtain the rights, Walt comes up against a curmudgeonly, uncompromising writer who has absolutely no intention of letting her beloved magical nanny get mauled by the Hollywood machine. But, as the books stop selling and money grows short, Travers reluctantly agrees to go to Los Angeles to hear Disney's plans for the adaptation.

All films will commence at 7.30 pm (doors open 7.00 pm) at Bretherton Endowed School. Refreshments available (including wine).

We will, be back in the Autumn. if you have any suggestions please contact us on;

brethertofs@btinternet.com or telephone John or Margaret Pigott on 01772 601455.

Scam Alert

Ignore and delete any emails which describe a 'sob story' and ask for money



Gardening News from Marguerite

After one of the wettest winters, our clay soil may be still very wet, but plants and shrubs, which like these conditions include, Helleborus orientalis, Pulmonarias, Primula Veris (cowslip), Candelabra Primulas & Camassias.

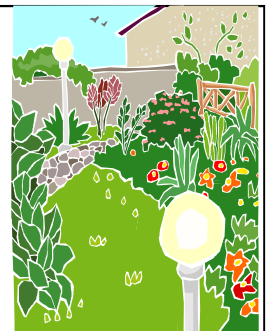
If your borders are too wet to work, plant up a container with scented spring plants. Jonquilla, Tazetta and Poeticus type narcissus, Viola Odorata, Iris Danfordiae, Tulip Angelique, Thyme, Prostrate Rosemary, dwarf Buddlieja Buzz would all be suitable

Garden Jobs for the Spring

In early spring sow hardy perennials for first year flowering.
Sow hardy annuals such as sweet peas, cerinthe and nigella.
Propagate climbers and shrubs by layering & herbaceous perennials by division.
Plant trees, shrubs, climbers, and herbaceous perennials if the weather is suitable.
Hard prune buddleja, fuchsia, caryopteris and other late flowering shrubs, cornus, salix (willow) and shrubs with ornamental stems. Also prune roses whilst still dormant.
Mid spring onwards prune back by a third early flowering shrubs such as forsythia, ribes, spirea after they have flowered.
Early spring prune clematis except group one types.
Late spring harden off bedding plants and half hardy annuals.
Prepare new beds, lawns and vegetable plots.
Sow new lawns and bare patches on existing lawns when the soil has warmed up.
Treat established lawns with weed and feed & mow as necessary.
Feed bulbs in borders and pots as they finish flowering with a slow release fertiliser such as Growmore or Fish, Blood and Bone.
If not done in the last few years split clumps of snowdrops and daffodils after flowering, replant and feed to maintain vigour and future flowering.
Cut back herbaceous perennials and deciduous grasses left for winter interest as new growth appears.
Protect emerging shoots from slug attack.
Clean up any debris including old pots, dead plants etc as they will harbour slugs.
Sew wildflower seeds in pots for a lovely display later in the year.

OPEN GARDENS IN BRETHERTON

Five gardens are opening on the 25 May, 15 June, 20 July, 07 September, to raise funds for the National Gardens Scheme (Macmillan, Marie Curie, Help the Hospices, Carer's Trust, etc) and St Catherine's Hospice. They are;
Terry & Sue Riding, Glywood House
John & Kris Jolley, Hazel Cottage
Thompson Dagnall & Jacqueline Iddon, Hazelwood
Richard & Barbara Farbon, Owl Barn
John & Gwenifer Jackson, Pear Tree Cottage



All the open days are Sundays, from 12 noon until 5 pm, and combined entry to all five is £5 per adult (accompanied children go free). Home-made teas will be on sale in the Congregational Schoolroom, there will be live music at Hazelwood and Glywood House, and Thompson Dagnall will be giving a sculpture demonstration at Hazelwood at 2 pm each time. You will be able to buy Bretherton honey at Owl Barn, and preserves from home-grown produce at Pear Tree Cottage. Jacqueline Iddon's Hardy Plant Nursery at Hazelwood will also be open to visitors for the sale of plants.

Our thanks go, as always, to all friends and neighbours in the village for their support and forbearance as we raise funds for charities.

For more information phone 01772 600896, or for photos and garden descriptions, visit www.ngs.org.uk and search for Bretherton Gardens by entering a local postcode.